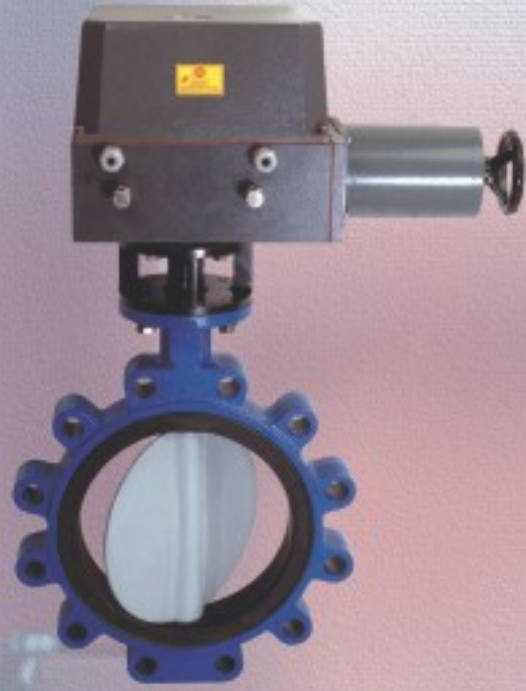


New Generation Direct Mounted



SINGLE PHASE QUARTER TURN ACTUATORS

New Generation Direct Mounted



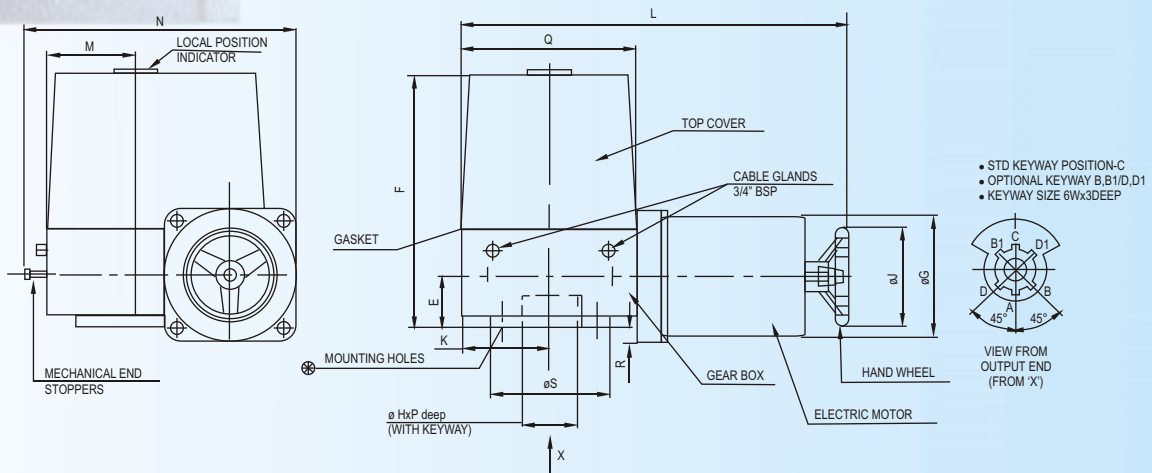
The various Type of electrical Actuators from Marsh have been developed specially for the quarter turn operation of small size Butterfly, Ball, Plug valves and dampers. Thanks to their design simplicity to achieve low-cost automation. They are provided with single phase motors which considerably saves the cost of electrical hardware and other accessories.

Also as the actuators are installed directly on final control element and are provided with stall-duty motors, the units become completely maintenance free, that is Fit and Forget type. The units are supplied with all necessary features to operate the final control element in ON/OFF or Modulating modes.

Technical Specifications

Actuator Data		Actuator Models						
		QT-3	QT-5	QT-10	QT-20	QT-30	QT-40	QT-50
Rated Output Torque Kgm		3	5	10	20	30	40	50
Operating Speed Sec /90°		17	17	20	20	26	26	26
Switching Frequency Operations / Hour								
a) Short Time								1200
b) Normal								600
Weight Kg.		14	15	27	28	38	40	42
Degree of Protection		IP65/IP67						
Area of Operation		Safe						
Motor Data								
Type		Non-Blocking A. C. Motor						
Supply : Standard		220V AC 50Hz Single Phase						
Optional		110 V AC 50Hz Single Phase						
Output wates		90	125	175	250	290	300	320
Nominal Current Amp		0.5	0.55	0.9	1.2	1.3	1.4	1.5
Class Insulation		F						
Ambient Temperature		45° C						

Actuator Dimention Details



Actuator Model	Dimentions												Mounting Holes
	E	F	øG	øH	øJ	K	L	M	N	P	Q	R	
QT-3	32	170	108	30	100	70	235	70	220	33	140	22	100
QT-5	32	170	108	30	100	70	255	70	220	33	140	22	100
QT-10	37	245	108	30	100	93	380	63	240	33	186	17	125
QT-20	37	245	108	30	100	93	400	63	240	33	186	17	125
QT-30	57	235	108	30	100	120	480	122.5	275	33	290	0	125
QT-40	57	235	108	30	100	120	490	122.5	275	33	290	0	125
QT-50	57	235	108	30	100	120	500	122.5	275	33	290	0	125

Mounting Holes:
 4H M6 x12 Deep on 50 PCD Off Centre.
 4H M8 x12 Deep on 70 PCD Off Centre.
 4H M8 x15 Deep on 70 PCD Off Centre.
 4H M10 x15 Deep on 102 PCD Off Centre.

Accessories

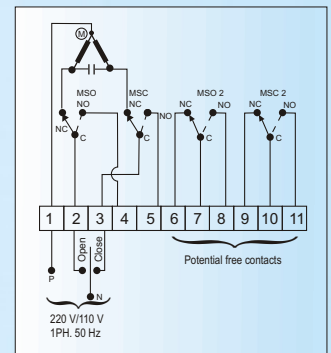
STANDARD

- Limit Switches (1No.+1Nc) - 2 Nos. (Rating 10 A - 250 VAC)
- Hand wheel
- Local position indicator
- Adjustable mechanical stoppers

OPTIONAL

- Auxillary limit switches - (1No + 1Nc) - 4 Nos.
- Torque limit switches (1No + 1Nc) - 2 Nos (for QT10 onwards)
- Three position switch for ON/OFF operation Field/Panel Mounted
- Feed back Potentiometer
- Valve positioner - Field / Panel mounted Input : 4-20mA/0-10 V DC. Output : Proportional
- Two wire transmitter field /Panel mounted Input : From potentiometer in actuator - 100 to 235 ohms or 0-1000 ohms Output : 4-20 mA - Two wire
- IP 67 Protection
- Remote position indicator-Digital
- Space heater
- Special accessories on request

Connection Diagram



marsh automation pvt. ltd.

Office & Works :
 98A/25A, Hadapsar Ind. Estate,
 Pune - 411013 (INDIA)

Tel.:
 0091-20-26875424/26879475/26877185
 Fax:
 0091-20-26879475

Email :
 marshautomation@eth.net
 Web Site :
 www.marshautomation.com

